

BASALIKE
UNCONVENTIONAL STONE



Un'émotion unique et originale, inspirée de la beauté de la Pierre Basaltina et enrichie de sophistiquées touches d'élégance.
Une surface matérique, pure et essentielle, idéale pour créer des ambiances suggestives et très personnelles.

Una emoción única y original, inspirada en la belleza de la Pietra Basaltina y enriquecida con sofisticados toques de elegancia.
Una superficie matérica, pura y esencial, para crear ambientes sugestivos y muy personales.

Ein einzigartiges und ursprüngliches Gefühl, das von der Schönheit der Naturstein Basaltina inspiriert ist, bereichert von einem Hauch raffinierter Eleganz.
Eine reine und essenzielle Natur-Oberfläche, mit der man eindrucksvolle und individuelle Wohnambiente kreieren kann.

BASALIKE

UNCONVENTIONAL STONE

A unique and genuine emotion, inspired by the beauty of the Basaltina Stone and enriched by sophisticated details of elegance.
A pure and simple textured surface, ideal to create evocative and very charming locations.

Un'emozione unica ed originale, ispirata dalla bellezza della Pietra Basaltina ed arricchita da sofisticati tocchi di eleganza.
Una superficie materica, pura ed essenziale, ideale per creare ambienti suggestivi e molto personali.



LINK

DRIP

BONES

LEAVES



PATTERNS NUANCES



DEEPGRAY

SKYGRAY

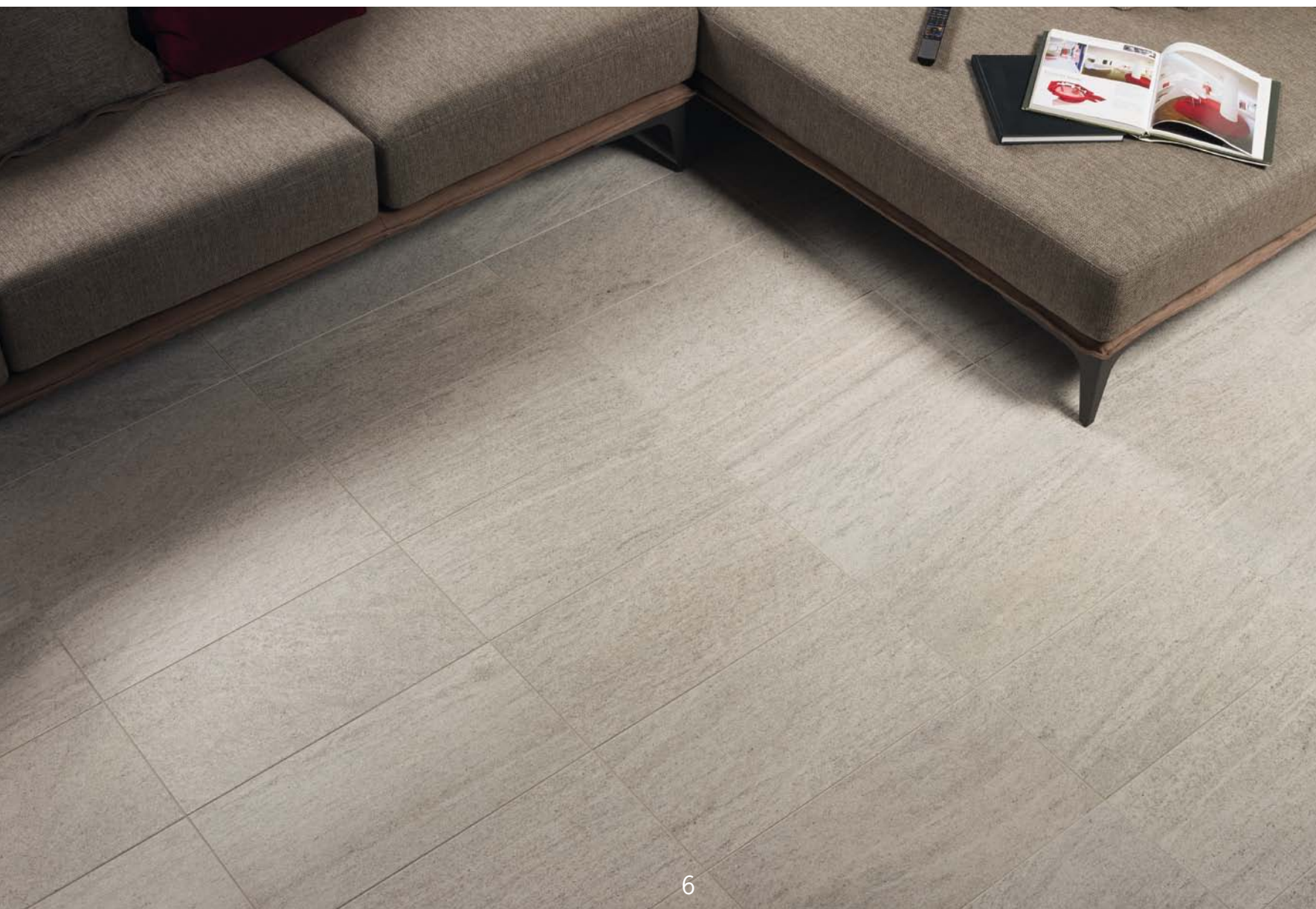
SOFTGRAY

LIGHTGRAY



LIGHTGRAY 45X90 • DRIP WARM 30X60

LIGHTGRAY 30X60



 **Microban**[®]
antibacterial protection

SOFTGRAY

SOFTGRAY 45X90 • STRAIGHT SOFTGRAY 30X30



SOFTGRAY 60X60



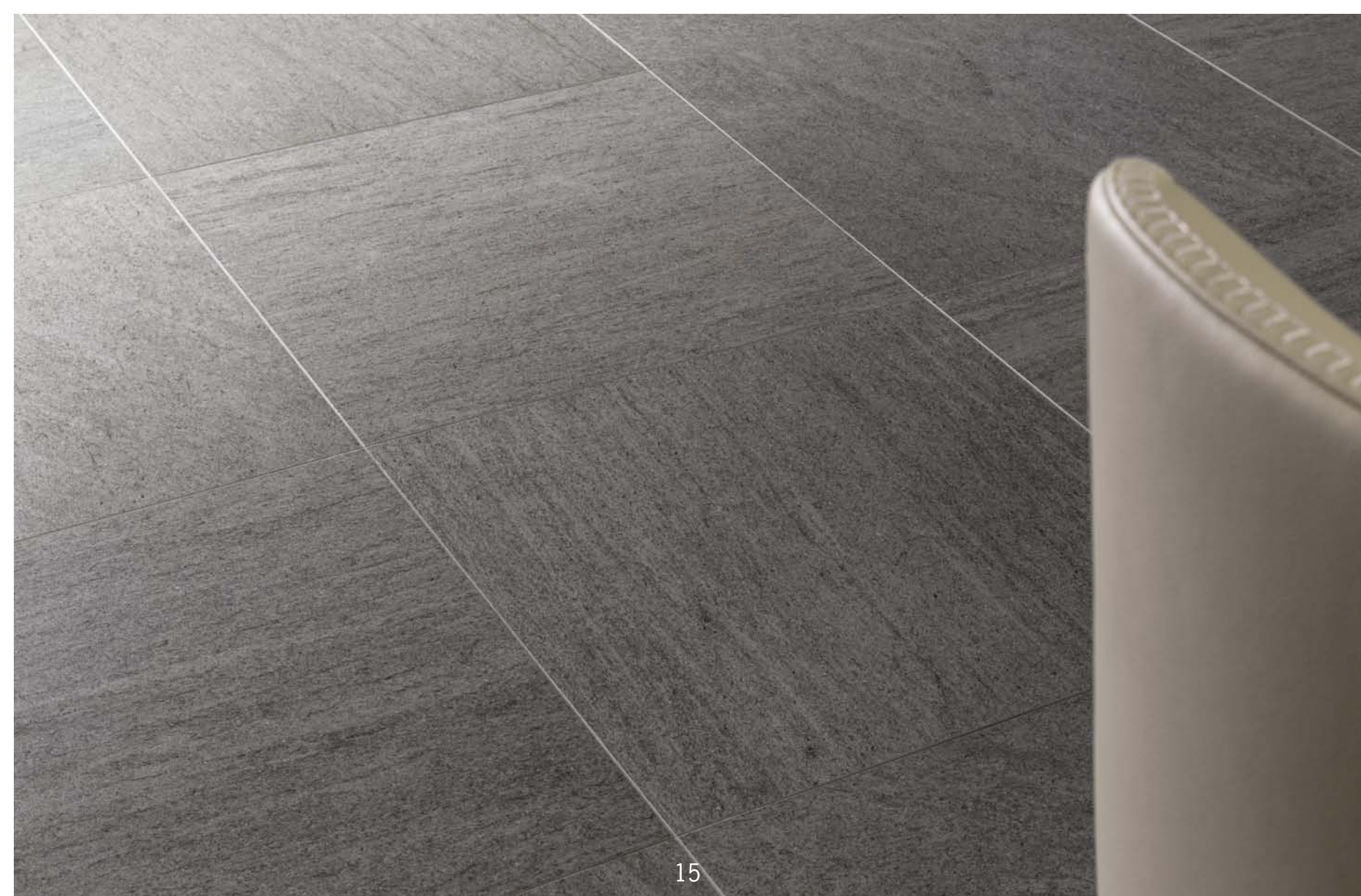


SKYGRAY 30X60,3 STRUTTURATO

SKYGRAY 60X60

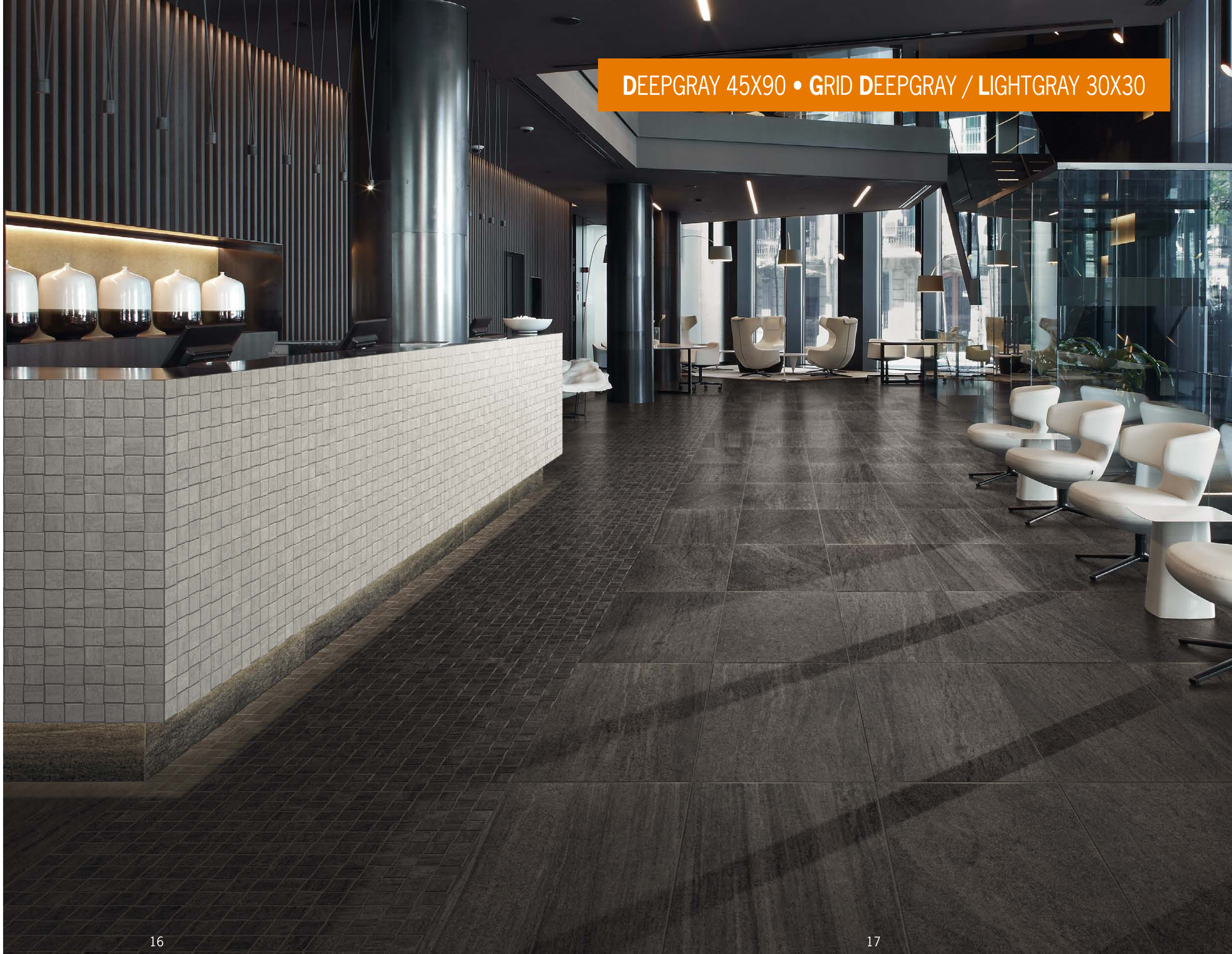


 **Microban**[®]
antibacterial protection

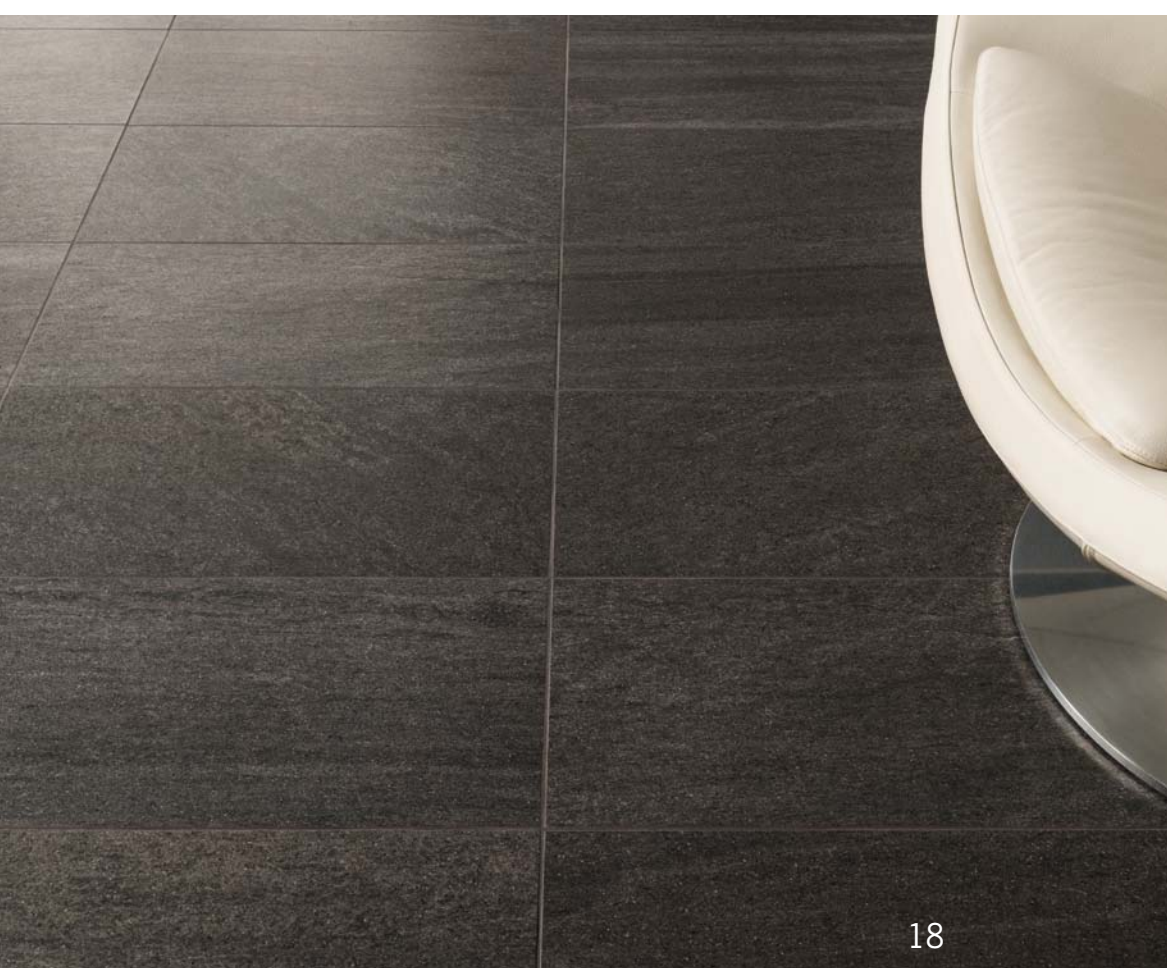


DEEPGRAY

DEEPGRAY 45X90 • GRID DEEPGRAY / LIGHTGRAY 30X30



DEEPGRAY 30X60



DEEPGRAY 30X60 / 60X60 • BONES 30X60



BONES

LEAVES



SKYGRAY 30X60 / 60X60 • **LEAVES** 30X60

SOFTGRAY 30X60 / 60X60 • LINK / BONES / LEAVES 30X60



LINK

DRIP



LIGHTGRAY 30X60 / 60X60 • DEEPGRAY 30X60 • DRIP COLD 30X60

FORMATI E COLORI



SIZE AND COLOURS

LIGHTGRAY



45X90 RETT • 18"X36"
± 10 MM.
COD. ITALIA **A68** ●
COD. ESTERO **076** ●

45,5X91,4 • 18"X36"
± 10 MM.
COD. ITALIA **B47** ●
COD. ESTERO **202** ●



60X60 RETT • 24"X24"
± 10 MM.
COD. ITALIA **A68** ●
COD. ESTERO **209** ●

60,3X60,3 • 24"X24"
± 10 MM.
COD. ITALIA **B47** ●
COD. ESTERO **226** ●



30X60 RETT • 12"X24"
± 10 MM.
COD. ITALIA **A61** ●
COD. ESTERO **072** ●

30X60,3 • 12"X24"
± 9 MM.
COD. ITALIA **A47** ●
COD. ESTERO **066** ●

30X60,3* STRUTT • 12"X24"
± 9 MM.
COD. ITALIA **A47** ●
COD. ESTERO **066** ●



15X15 RETT • 6"X6"
± 10 MM.
COD. ITALIA **B12** ●
COD. ESTERO **101** ●

SOFTGRAY



45X90 RETT • 18"X36"
± 10 MM.
COD. ITALIA **A68** ●
COD. ESTERO **076** ●

45,5X91,4 • 18"X36"
± 10 MM.
COD. ITALIA **B47** ●
COD. ESTERO **202** ●



60X60 RETT • 24"X24"
± 10 MM.
COD. ITALIA **A68** ●
COD. ESTERO **209** ●

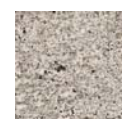
60,3X60,3 • 24"X24"
± 10 MM.
COD. ITALIA **B47** ●
COD. ESTERO **226** ●



30X60 RETT • 12"X24"
± 10 MM.
COD. ITALIA **A61** ●
COD. ESTERO **072** ●

30X60,3 • 12"X24"
± 9 MM.
COD. ITALIA **A47** ●
COD. ESTERO **066** ●

30X60,3* STRUTT • 12"X24"
± 9 MM.
COD. ITALIA **A47** ●
COD. ESTERO **066** ●



15X15 RETT • 6"X6"
± 10 MM.
COD. ITALIA **B12** ●
COD. ESTERO **101** ●

SKYGRAY



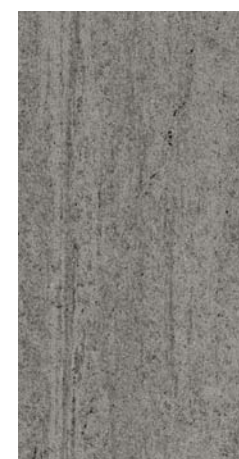
45X90 RETT • 18"X36"
± 10 MM.
COD. ITALIA **A68** ●
COD. ESTERO **076** ●

45,5X91,4 • 18"X36"
± 10 MM.
COD. ITALIA **B47** ●
COD. ESTERO **202** ●



60X60 RETT • 24"X24"
± 10 MM.
COD. ITALIA **A68** ●
COD. ESTERO **209** ●

60,3X60,3 • 24"X24"
± 10 MM.
COD. ITALIA **B47** ●
COD. ESTERO **226** ●



30X60 RETT • 12"X24"
± 10 MM.
COD. ITALIA **A61** ●
COD. ESTERO **072** ●

30X60,3 • 12"X24"
± 9 MM.
COD. ITALIA **A47** ●
COD. ESTERO **066** ●

30X60,3* STRUTT • 12"X24"
± 9 MM.
COD. ITALIA **A47** ●
COD. ESTERO **066** ●



15X15 RETT • 6"X6"
± 10 MM.
COD. ITALIA **B12** ●
COD. ESTERO **101** ●

DEEPGRAY



45X90 RETT • 18"X36"
± 10 MM.
COD. ITALIA **A68** ●
COD. ESTERO **076** ●

45,5X91,1 • 18"X36"
± 10 MM.
COD. ITALIA **B47** ●
COD. ESTERO **202** ●



60X60 RETT • 24"X24"
± 10 MM.
COD. ITALIA **A68** ●
COD. ESTERO **209** ●

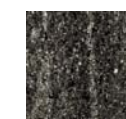
60,3X60,3 • 24"X24"
± 10 MM.
COD. ITALIA **B47** ●
COD. ESTERO **226** ●



30X60 RETT • 12"X24"
± 10 MM.
COD. ITALIA **A61** ●
COD. ESTERO **072** ●

30X60,3 • 12"X24"
± 9 MM.
COD. ITALIA **A47** ●
COD. ESTERO **066** ●

30X60,3* STRUTT • 12"X24"
± 9 MM.
COD. ITALIA **A47** ●
COD. ESTERO **066** ●



15X15 RETT • 6"X6"
± 10 MM.
COD. ITALIA **B12** ●
COD. ESTERO **101** ●

* LA PROTEZIONE MICROBAN NON È APPLICATA / THE MICROBAN PROTECTION IS NOT APPLIED

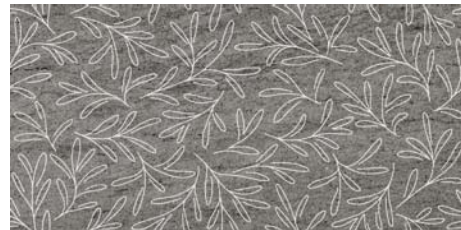
LEAVES



30X60 RETT • 12"X24"
LIGHTGRAY
± 10 MM.
COD. ITALIA [A46](#)
COD. ESTERO [077](#)



30X60 RETT • 12"X24"
SOFTGRAY
± 10 MM.
COD. ITALIA [A46](#)
COD. ESTERO [077](#)



30X60 RETT • 12"X24"
SKYGRAY
± 10 MM.
COD. ITALIA [A46](#)
COD. ESTERO [077](#)



30X60 RETT • 12"X24"
DEEPGRAY
± 10 MM.
COD. ITALIA [A46](#)
COD. ESTERO [077](#)

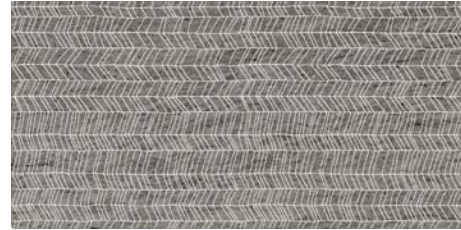
BONES



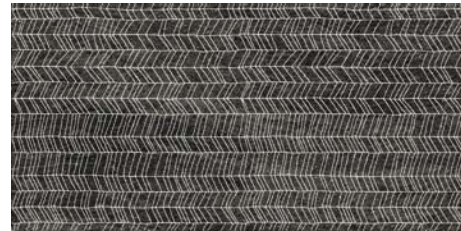
30X60 RETT • 12"X24"
LIGHTGRAY
± 10 MM.
COD. ITALIA [A46](#)
COD. ESTERO [077](#)



30X60 RETT • 12"X24"
SOFTGRAY
± 10 MM.
COD. ITALIA [A46](#)
COD. ESTERO [077](#)



30X60 RETT • 12"X24"
SKYGRAY
± 10 MM.
COD. ITALIA [A46](#)
COD. ESTERO [077](#)



30X60 RETT • 12"X24"
DEEPGRAY
± 10 MM.
COD. ITALIA [A46](#)
COD. ESTERO [077](#)

LINK

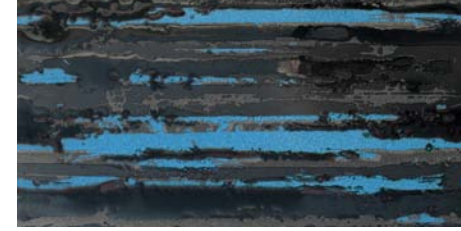


30X60 RETT • 12"X24"
LINK
± 10 MM.
COD. ITALIA [A62](#)
COD. ESTERO [194](#)

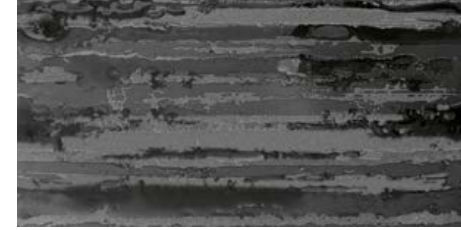
DRIP



30X60 RETT • 12"X24"
DRIP WARM
± 10 MM.
COD. ITALIA [A90](#)
COD. ESTERO [095](#)



30X60 RETT • 12"X24"
DRIP COLD
± 10 MM.
COD. ITALIA [A90](#)
COD. ESTERO [095](#)

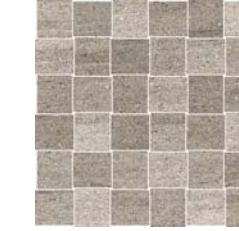


30X60 RETT • 12"X24"
DRIP BLACK
± 10 MM.
COD. ITALIA [A90](#)
COD. ESTERO [095](#)

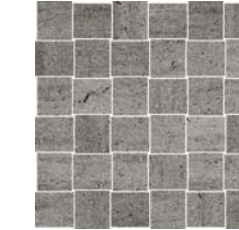
GRID



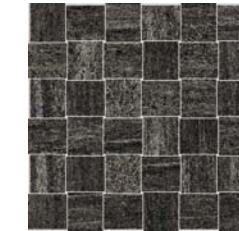
30X30 • 12"X12"
LIGHTGRAY
MOSAICO 36 PZ
± 10 MM.
COD. ITALIA [A25](#)
COD. ESTERO [039](#)



30X30 • 12"X12"
SOFTGRAY
MOSAICO 36 PZ
± 10 MM.
COD. ITALIA [A25](#)
COD. ESTERO [039](#)

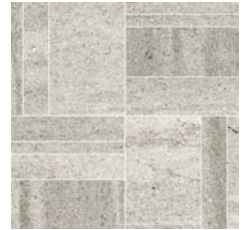


30X30 • 12"X12"
SKYGRAY
MOSAICO 36 PZ
± 10 MM.
COD. ITALIA [A25](#)
COD. ESTERO [039](#)



30X30 • 12"X12"
DEEPGRAY
MOSAICO 36 PZ
± 10 MM.
COD. ITALIA [A25](#)
COD. ESTERO [039](#)

STRAIGHT



30X30 • 12"X12"
LIGHTGRAY
MOSAICO
± 10 MM.
COD. ITALIA [A25](#)
COD. ESTERO [039](#)



30X30 • 12"X12"
SOFTGRAY
MOSAICO
± 10 MM.
COD. ITALIA [A25](#)
COD. ESTERO [039](#)



30X30 • 12"X12"
SKYGRAY
MOSAICO
± 10 MM.
COD. ITALIA [A25](#)
COD. ESTERO [039](#)



30X30 • 12"X12"
DEEPGRAY
MOSAICO
± 10 MM.
COD. ITALIA [A25](#)
COD. ESTERO [039](#)

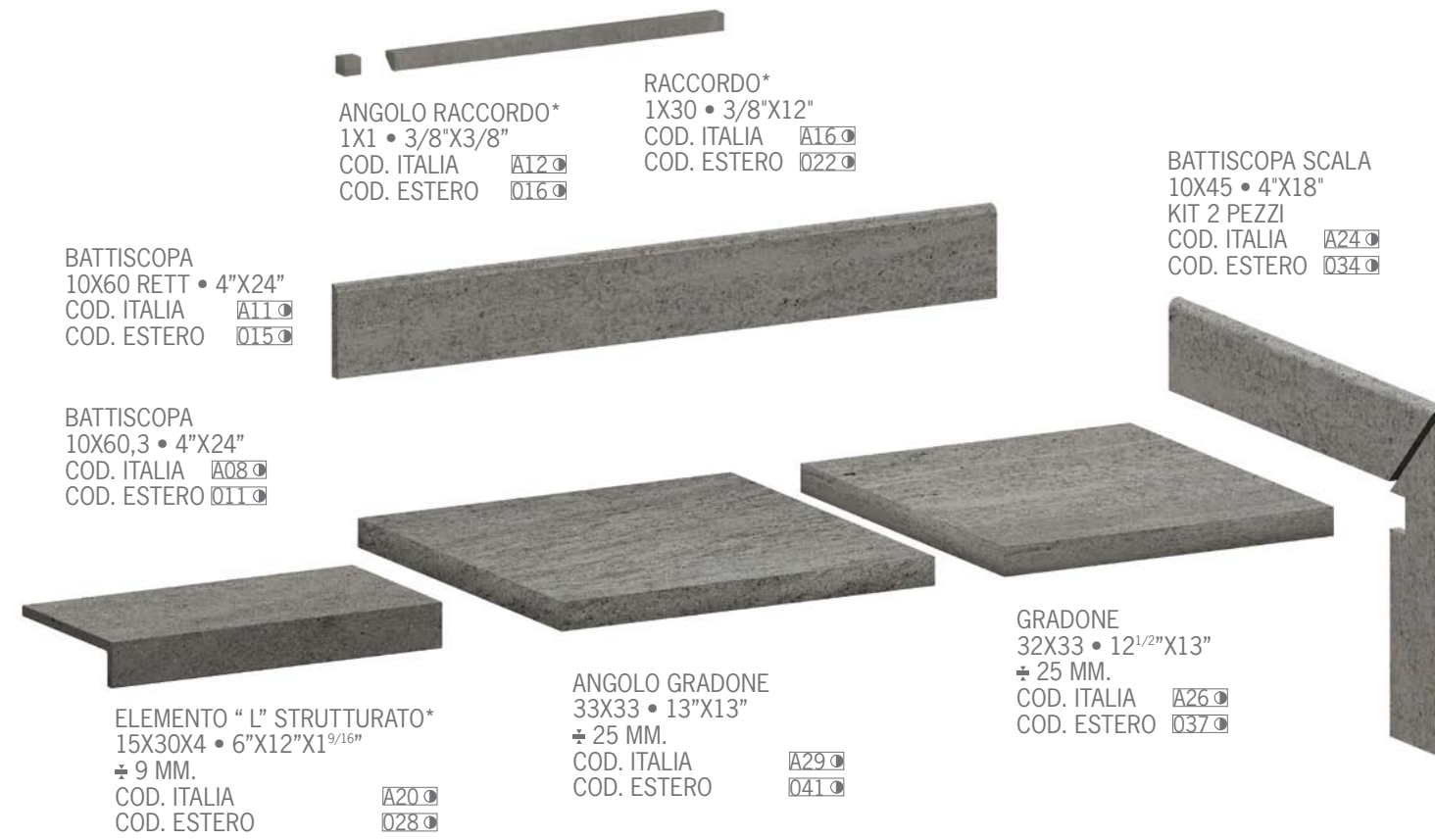
* LA PROTEZIONE MICROBAN NON È APPLICATA /
THE MICROBAN PROTECTION IS NOT APPLIED

PEZZI SPECIALI

TRIM PIECES

IMBALLI E PESI

PACKINGS AND WEIGHTS



* LA PROTEZIONE MICROBAN NON È APPLICATA / THE MICROBAN PROTECTION IS NOT APPLIED



CARATTERISTICHE TECNICHE

TECHNICAL FEATURES

GRES A MASSA COLORATA EN 14411-G (Bla-UGL) • ANSI A137.1-UGL (UNGLAZED PORCELAIN TILES - P1 CLASS) • ISO 13006-G (Bla-UGL)		NATURALE	STRUTTURATO
	RESISTENZA ALLA SCIVOLOSITÀ SLIP RESISTANCE RUTSCHFESTIGKEIT RÉSISTANCE AU GLISSEMENT RESISTENCIA DEL RESBALÓN	DIN 51130 DIN 51097 BCR-TORTUS BOT 3000	R10 B (A+B) > 0,40 ≥ 0.42
	RESISTENZA ALLE MACCHIE STAIN RESISTANCE FLECKENBESTÄNDIGKEIT RÉSISTANCE AUX TACHES RESISTENCIAS A LAS MANCHAS	ISO 10545-14 ASTM C1378	5 RESISTENTE RESISTANT BESTÄNDIG RÉSISTANT RESISTENTE
	RESISTENZA ALL' ATTACCO CHIMICO CHEMICAL RESISTANCE CHEMISCHE BESTÄNDIGKEIT RÉSISTANCE CHIMIQUE RESISTENCIA A LOS PRODUCTOS QUIMICOS	ISO 10545-13 ASTM C650	5 RESISTENTE RESISTANT BESTÄNDIG RÉSISTANT RESISTENTE
	RESISTENZA AL GELO FROST RESISTANCE FROSTBESTÄNDIGKEIT RÉSISTANCE AU GEL RESISTENCIA AL HIELO	ISO 10545-12 ASTM C1026	5 RESISTENTE RESISTANT BESTÄNDIG RÉSISTANT RESISTENTE
	MODERATA VARIAZIONE MODERATE VARIATION		V3
	FUGA MINIMA / MINIMUM JOINT		
	RETT	2MM	
	NON RETT 45,5X91,4	3-4 MM 4 MM	
	FUGA PER POSA MODULARE / JOINT FOR MODULAR INSTALLATION		
	RETT (ECCEPPO / EXCEPT 45X90 CM)	2 MM	
NON RETT 45,5X91,4	3-4 MM 4 MM		

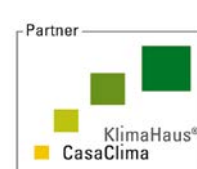
DESCRIZIONE DESCRIPTION BESCHREIBUNG DESCRIPTION	FORMATI SIZES FORMATE FORMATOS	PEZZI SCATOLA PIECES BOX STÜCK-KARTON PIÉCES BOÎTE PZAS. CAJA	PESO SCATOLA KG. WEIGHT BOX GEWICHT KARTON POIDS BOÎTE PESO CAJA KG	MQ. SCATOLA SQM BOX QM. KARTON M² BOÎTE M² CAJA	ML SCATOLA LM BOX LM KARTON ML BOÎTE ML CAJA	SCATOLE PALLET BOXES PALLET KARTONS PALETTE BOÎTES PALETTE CAJAS PALLET	PESO PALLET KG WEIGHT PALLET GEWICHT PALETTE POIDS PALETTE PESO PALLET KG.	MQ. PALLET SQM PALLET QM PALETTE M² PALETTE M² PALLET
FONDO	45X90	3	30	1,215	-	27	810	32,805
FONDO	45,5X91,4	3	30	1,248	-	27	810	33,685
FONDO	60,3X60,3	4	32,5	1,454	-	32	1040	46,54
FONDO	60X60 RETT	4	32	1,440	-	32	1024	46,08
FONDO	30X60,3	9	33,45	1,628	-	32	1070,4	52,099
FONDO	30X60 RETT	9	33,45	1,628	-	32	1070,4	52,099
FONDO	30X60,3 STRUTT	9	33,45	1,628	-	32	1070,4	52,099
FONDO	15X15 RETT	38	19,52	0,855	-	72	1405,44	61,56
LEAVES	30X60	2	8	0,36	-	-	-	-
BONES	30X60	2	8	0,36	-	-	-	-
LINK	30X60	2	8	0,36	-	-	-	-
DRIP	30X60	2	8	0,36	-	-	-	-
STRAIGHT	30X30 MOS	4	7,5	0,36	-	78	585	28,08
GRID	30X30 MOS	4	7,5	0,36	-	78	585	28,08
BATTISCOPA	10X60,3	16	20	0,964	9,648	48	960	46,31
BATTISCOPA	10X60 RETT	12	15,48	0,72	7,20	55	851,4	39,6
BATTISCOPA SCALA KIT (2 PZ.)	10X45	5	8,5	0,425	-	-	-	-
GRADONE	32X33	2	11	0,211	-	92	1012	19,43
GRADONE ANGOLARE	33X33	2	11,4	0,218	-	92	1048,8	20,038
ELEMENTO "L"	15X30X4 STRUTT	8	9,60	0,36	2,40	48	460,80	17,28
RACCORDO	1X30	8	0,80	0,024	-	-	-	-
ANGOLO RACCORDO	1X1	10	0,07	0,001	-	-	-	-

100% ECO-COMPATIBLE

	100% REUSE OF UNFIRED TILES Crude waste generated by the process is reintegrated in the production cycle with no costs for the environment. This contributes to the safeguard of natural resources.
	100% RECYCLING OF THE INDUSTRIAL WASTE (FIRED TILES) All the waste-fired tiles generated by the process are recycled from the building industry as inert supports for road subsoils and foundations, reducing the use of new natural resources. 100% RECYCLING OF NON CERAMIC WASTE 100% of non ceramic waste is differentiated and recycled in other production cycles.
	100% RECYCLING OF WATER The water used in the production process is 100% recycled. The water demand is reduced by about 60% by this mean. No industrial water is discharged in the ecosystem.
	LOW EMISSIONS IN THE ATMOSPHERE Panaria complies strictly to Italian standards with a very small amount of gas emissions in the atmosphere. The high quality of the technology used keeps our emissions 10 times inferior the allowed limits (cfr Post-Kyoto Protocol negotiations on greenhouse gas emissions).
	HIGH REDUCTION OF METHANE CONSUMPTION (-25%) Methane consumption is highly reduced (-25%) by the use of up to date technologies and customized installations.
	SAFETY REQUIREMENTS: "ANTISLIP" PROPERTIES BASALIKE has got "Antislip" properties (ANSI A137.1 BOT3000 DCOF ≥ 0.42 and DCOF ≥ 0.62 strutturato), in order to provide the highest safety and quality of life to those who both live and design the buildings.
	SAFETY REQUIREMENTS: NO FIRE REACTION Panaria tiles are totally flameproof, they withstand the destructive action of fire, they do not promote flame spread and, on contact with flames, do not produce either smoke or toxic fumes: therefore they are classified in Class A1f and A1(no reaction to fire) from the EU Decision 96/60/CE.
	100% RECYCLABLE PANARIA PACKING MATERIAL Panaria packing material is 100% recyclable (carton boxes, plastic packaging materials, wooden pallets, straps, etc..).
	FAO PALLETS Panaria uses debarked pallets (DB) for its shipments, in accordance with the IPPC/FAO ISPM 15 standards. This is a further warranty for the forest safeguard of the importing Countries, dealing with PANARIA.

40%
CERAMICA PANARIA
recycled ceramic content
[preconsumer material]

100%
ECO COMPATIBLE
CERAMICA PANARIA
AND ITS COMMITMENT TO PROTECTING THE ENVIRONMENT



LEED CREDITS

PANARIA Ceramica is a member of the U.S. Green Building Council and Green Building Council Italia, two organizations that promotes buildings that are environmentally friendly, profitable and healthy places to live and work in. Basalike contributes to the achievement of several LEED CREDITS for the buildings in which it is placed. This in accordance with the standard USBGC LEED Rating System and the Italian standard LEED NC issued by GBC Italy, as indicated in the general catalog and on the website Panaria www.panaria.it. A dedicated scoring card is available, as an effective tool to calculate the LEED points involved, depending on the product used and combined with the whole project features.



MICROBAN PROTEZIONE ANTIBATTERICA SEMPRE ATTIVA

CONTINUOUS ACTIVE ANTIBACTERIAL ACTION



PROTEZIONE INTEGRATA

La protezione Microban viene integrata direttamente nelle piastrelle durante il processo produttivo: quando i batteri entrano in contatto con la superficie trattata, la tecnologia Microban agisce bloccandone il metabolismo. In questo modo si interrompe il ciclo vitale dei batteri, che pertanto non sono più in grado di proliferare e sopravvivere.

BUILT-IN PROTECTION

The Microban protection is directly incorporated into the tiles during the production process: when bacteria comes into contact with the treated surface, the Microban technology reacts, blocking the metabolism of the bacteria. It therefore interrupts the life cycle of bacteria, which is no longer able to proliferate and survive.



PROTEZIONE CONTINUA

La tecnologia Microban funziona inoltre 24 ore su 24 garantendo di fatto una protezione continua giorno e notte, mantenendo le piastrelle più pulite fra una pulizia e l'altra.

CONTINUOUS PROTECTION

In addition, Microban technology is active 24 hours a day, guaranteeing continuous protection day and night, keeping tiles more hygienic in between cleans.



PROTEZIONE DUREVOLE

A differenza dei disinfettanti che rappresentano una soluzione istantanea, ma di breve durata, Microban garantisce una protezione durevole, esercitando un'azione continua contro i batteri durante l'intero ciclo di vita del prodotto.

DURABLE PROTECTION

Unlike disinfectants, which provide an instantaneous solution, but one that is not long-lasting, Microban guarantees a durable solution, providing continuous action against bacteria throughout the entire life cycle of the product.



PREVENZIONE DELLA FORMAZIONE DI BIOPELLICOLA

L'azione antibatterica continua di Microban previene la formazione di biopellicole. Le biopellicole, o biofilm, sono colonie di batteri che costituiscono una vera e propria copertura sulla superficie. Tali colonie possono danneggiare la superficie che rivestono, ad esempio le piastrelle. Una volta raggiunto un certo stadio, la biopellicola può deteriorare l'aspetto del prodotto. Oltre alle considerazioni estetiche, la formazione di biopellicole ostacola ulteriormente il mantenimento dell'igiene della superficie.

PREVENTION FROM BIOFILM FORMING

The continuous antibacterial action of Microban technology prevents the biofilm formation. Biofilms are colonies of bacteria which form a coating upon a surface. These colonies can be damaging to the surface that they inhabit, such as ceramic tiles and once the formation of the biofilm has reached a certain stage can mar the visual appearance of the product. In addition to aesthetic considerations, the build-up of a biofilm creates an additional challenge in maintaining surface hygiene.



PROTEZIONE GARANTITA

La tecnologia Microban è stata sottoposta a prove approfondite eseguite da laboratori indipendenti e gode di una lunga storia che ne garantisce la sicurezza d'uso. È registrata in Europa ai sensi della Direttiva sui Prodotti Biocidi per tutte le applicazioni in cui è utilizzata. Gli additivi Microban sono incorporati in beni di consumo, manufatti industriali e dispositivi medici prodotti da aziende leader in tutto il mondo ed oggi è a beneficio esclusivo di Ceramica Panaria e Panariagroup, da sempre all'avanguardia!

GUARANTEED PROTECTION

Microban technology has undergone rigorous trials conducted by independent laboratories and benefits from a long history that guarantees its safety of use. It is registered in Europe under the Biocidal Products Directive for all applications in which it is used. Microban builders are incorporated into consumer goods, industrial products and medical equipment manufactured by some of the world's leading companies. Today, this technology is available exclusively to Ceramica Panaria and Panariagroup: always at the cutting-edge!

BASALIKE

JULY 2014

CONCEPT:
MKTG Panaria

DESIGN:
Silvia Stanzani

PHOTO:
Punto Immagine

PRINT:
Grafiche dell'Artiere



Ceramics of Italy



Via Panaria Bassa, 22/a - 41034 Finale Emilia (Modena) - Italy
Tel. +39 0535 95111 Fax +39 0535 90503
www.panaria.it - info@panaria.it



