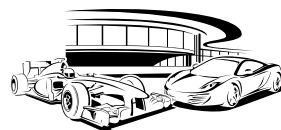


VIEW360



McLAREN TECHNOLOGY CENTRE
OFFICIAL PARTNER

 **pastorelli**



V I E W 3 6 0
W H I T E

VIEW WHITE 30x60 RETT - VIEW BRICK WHITE 30x60 RETT



VIEW WHITE 80x80 RETT - VIEW WHITE 40x80 RETT - VIEW GREY 20x80 RETT



V I E W 3 6 0
W H I T E

VIEW WHITE 80x80 RETT - VIEW WHITE 40x80 RETT
VIEW GREY 40x80 RETT - VIEW GREY 20x80 RETT



V I E W 3 6 0
G R E Y

VIEW GREY 80x80 RETT



VIEW GREY 30x60 GRIP/NAT - VIEW ELEMENTO ANGOLARE MONOLITICO 60x5x5 GRIP



V I E W 3 6 0
G R E Y

VIEW BRICK GREY 30x60 RETT



V I E W 3 6 0
B L A C K

VIEW BLACK 30x60 RETT - VIEW MOSAICO BLACK 30x30



VIEW BLACK 30x60 RETT - VIEW MOSAICO BLACK 30x30



V I E W 3 6 0
B L A C K

VIEW BLACK 30x60 RETT - VIEW MOSAICO BLACK 30x30

NATURALE			
B.C.R.A.	ASTM C1028	DIN 51097	DIN 51130
dry > 0,40	dry > 0,60	B	R10
wet > 0,40	wet > 0,60		

GRIP	
DIN 51097	DIN 51130
C	R12

SHADE SPECTRUM			
Low <input type="checkbox"/>	Moderate <input type="checkbox"/>	High <input type="checkbox"/>	Random <input type="checkbox"/>

FORMATO	SPESSORE	Pzx	Mqx	Kgx	Mqx	Kgx
80x80	10,5	2	1,28	29,40	40	51,20
40x80	10,5	3	0,96	22,00	28	26,88
20x80	10,5	6	0,96	22,00	28	26,88
60x60	10,5	4	1,44	31,80	32	46,08
30x60	10,5	6	1,08	23,50	40	43,20
30x30	10,5	12	1,08	24,00	40	47,52

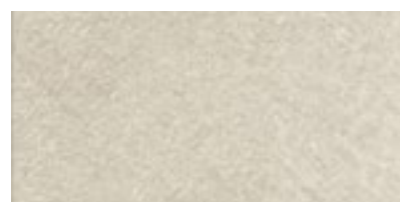
VIEW WHITE



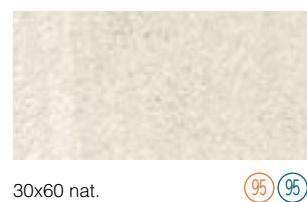
80x80 rett. 175 175



60x60 nat. 125 125
60x60 nat./rett. 161 161



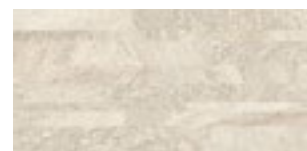
40x80 nat. 125 125
40x80 nat./rett. 161 161



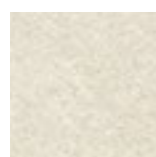
30x60 nat. 95 95
30x60 nat./rett. 145 145
30x60 grip/nat. 97 97



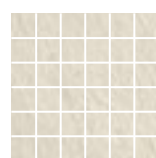
20x80 rett. 177 177



brick 30x60 rett. 117 117



30x30 nat. 73 73



mosaico 30x30 nat. 230 230
(tessera 5x5)
mosaico 30x30 grip 230 230
(tessera 5x5)

VIEW GREY



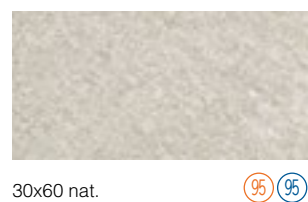
80x80 rett. 175 175



60x60 nat. 125 125
60x60 nat./rett. 161 161



40x80 nat. 125 125
40x80 nat./rett. 161 161



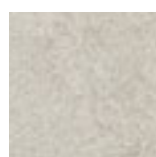
30x60 nat. 95 95
30x60 nat./rett. 145 145
30x60 grip/nat. 97 97



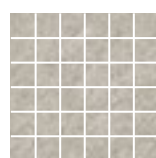
20x80 rett. 177 177



brick 30x60 rett. 117 117

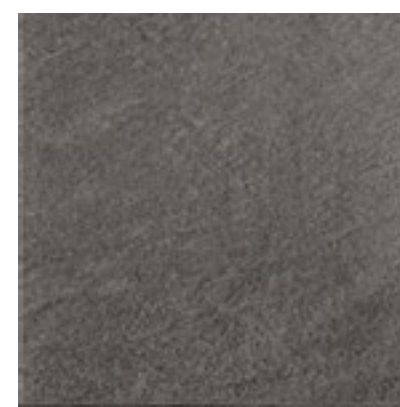


30x30 nat. 73 73

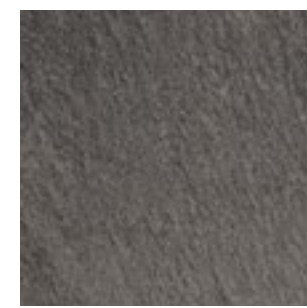


mosaico 30x30 nat. 230 230
(tessera 5x5)
mosaico 30x30 grip 230 230
(tessera 5x5)

VIEW BLACK



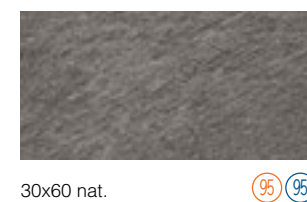
80x80 rett. 175 175



60x60 nat. 125 125
60x60 nat./rett. 161 161



40x80 nat. 125 125
40x80 nat./rett. 161 161



30x60 nat. 95 95
30x60 nat./rett. 145 145
30x60 grip/nat. 97 97



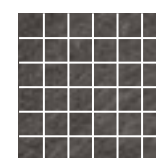
20x80 rett. 177 177



brick 30x60 rett. 117 117



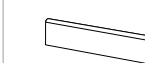
30x30 nat. 73 73



mosaico 30x30 nat. 230 230
(tessera 5x5)
mosaico 30x30 grip 230 230
(tessera 5x5)

Pezzi SPECIALI

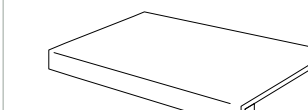
Special trims - Sonderstücke
Piezas especiales - Piezas especiales



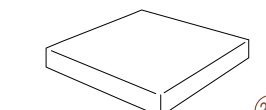
• Battiscopa 11 33
7,2x30 nat.



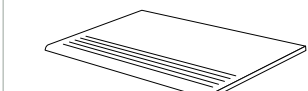
• Battiscopa 15 10
10x80 rett.



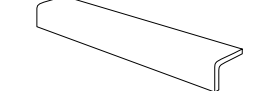
• Gradone Assemblato. 233 4
33x60 nat.



• Gradone ang. Assemblato 227 2
33x33 nat.



• Gradino 30x60 nat. 89 6

















• Elemento angolare monolitico 197 4
60x5x5 (grip)

Listello Alluminio 1x80 151

Listello Alluminio 0,6x60 139

• DISPONIBILE SU TUTTI I COLORI
Available in all colours
In allen Farben erhältlich
Disponible dans toutes les couleurs
Se comercializas en todos los colores

			 UNI EN 14411 Ap. G		 ANSI 137.1		
CARATTERISTICHE TECNICHE TECHNICAL STANDARDS TECHNISCHE EIGENSCHAFTEN CHARACTERISTIQUES TECHNIQUES CARACTERÍSTICAS TÉCNICAS		NORME EUROPEE REFERENCE STANDARD BEZUGSNORM NORME DI REFERENZE NORMAS EUROPEAS	REQUISITI REQUIREMENTS VORAUSSETZUNGEN CONDITIONS REQUISES REQUISITOS		NORME ASTM REFERENCE STANDARD BEZUGSNORM NORME DI REFERENZE NORMAS	REQUISITI REQUIREMENTS VORAUSSETZUNGEN CONDITIONS REQUISES REQUISITOS	
RESISTENZA AL GELO FROST RESISTANCE FROSTBESTÄNDIGKEIT RESISTANCE AU GEL RESISTENCIA AL HIELO		UNI EN ISO 10545-12	Richiesta Required Gefordert Demande Solicitud	Resiste Resists Standhallet Résiste Resiste	C1026	-	Resiste Resists Standhallet Résiste Resiste
ASSORBIMENTO D'ACQUA WATER ABSORPTION WASSERAUFNAHME ABSORPTION D'EAU ABSORCIÓN DE AGUA		UNI EN ISO 10545-3	≤ 0,5%	≤ 0,1%	C373	≤ 0,5%	≤ 0,1%
RESISTENZA ALLA FLESSIONE BENDING STRENGTH BIEGEFESTIGKEIT RESISTANCE À LA FLEXION RESISTENCIA A LA FLEXIÓN		UNI EN ISO 10545-4	≥ 35 N/mm ²	≥ 45 N/mm ²	C648	≥ 250 Lbs	≥ 300 Lbs
RESISTENZA CHIMICA CHEMICAL RESISTANCE CHEMIKALIENBESTÄNDIGKEIT RESISTANCE CHIMIQUE RESISTENCIA QUÍMICA		UNI EN ISO 10545-13	Resistenza a sali da piscina o additivi ad uso domestico = Classe GB minimo <i>Resistance to swimming pool salts or additives for domestic use – class GB minimum. Resistent gegen Salze in Schwimmbädern sowie im Haushaltsgebrauch = Klasse Minimum GB. Résistance au sel de piscine ou additif domestique=classe GB minimum. Resistencia a las sales de piscina o a los aditivos para utilización doméstica = clase G.B. mínimo.</i>	Resiste Resists Standhallet Résiste Resiste	C650	-	Resiste Resists Standhallet Résiste Resiste
			Resistenza ad acidi e basi a bassa concentrazione = Dichiarato dal fabbricante <i>Resistance to acids and bases with low concentration – declared by the manufacturer. Niedrig konzentrierte Säure und Basen beständigkeit, Herstellererklärung. Résistance aux acides et bases à basses concentration = Déclaration du fabricant. Resistencia a los ácidos y a las bases de baja concentración = declarado por el productor</i>	-		-	
			Resistenza ad acidi e basi ad alta concentrazione = Metodo di prova disponibile <i>Resistance to acids and bases with high concentration – test method available. Hoch konzentrierte Säure und Basen beständigkeit, Prüfzeugnis Verfügbar. Résistance aux acides et bases à hautes concentration = méthodes de preuve disponible. Resistencia a los ácidos y a las bases de alta concentración = método de prueba disponible</i>	Resiste Resists Standhallet Résiste Resiste		-	-
DUREZZA SUPERFICIALE (SCALA MOHS) MOHS' HARDNESS RITZHÄRTE DER OBERFLÄCHE DURETÉ SUPERFICIELLE À LA RAYURE DUREZA SUPERFICIAL (ESCALA MOHS)		CTI - 81-7	-	≥ 5	CTI - 81-7	-	≥ 5
DILATAZIONE TERMICA LINEARE LINEAR THERMAL EXPANSION LINEARE THERMISCHE AUSDEHNUNG DILATATION THERMIQUE LINEAIRE DILATACIÓN TÉRMICA LINEAL		UNI EN ISO 10545-8	-	≥ 9Mk ⁻¹	C372	-	-
RESISTENZA AL CAVILLO RESISTANT TO CRAZING HAARRISSBESTÄNDIGKEIT RÉSISTANCE À LA CRAQUELURE RESISTENCIA A LAS GRIETAS		UNI EN ISO 10545-11	Richiesta Required Gefordert Demande Solicitud	≥ 9Mk ⁻¹	C424	Richiesta Required Gefordert Demande Solicitud	Resiste Resists Standhallet Résiste Resiste
RESISTENZA AGLI SBALZI TERMICI RESISTANT TO THERMAL SHOCKS THERMOSCHOCKBESTÄNDIGKEIT RÉSISTANCE AUX ÉCARTS DE TEMPÉRATURE RESISTENCIA A LOS CAMBIOS BRUSCOS DE TEMPERATURA		UNI EN ISO 10545-9	-	Resiste Resists Standhallet Résiste Resiste	C484	Richiesta Required Gefordert Demande Solicitud	Resiste Resists Standhallet Résiste Resiste
RESISTENZA ALLE MACCHIE RESISTANT TO STAINING FLECKENBESTÄNDIGKEIT RÉSISTANCE AUX TACHES RESISTENCIA A LAS MANCHAS		UNI EN ISO 10545-14	≥ 3	≥ 4	C1378	-	-
RESISTENZA ALL'ABRASIONE PROFONDA RESISTANCE TO DEEP ABRASION WIDERSTAND GEGEN TIEFENVERSCHLEISS RESISTANCE A L'ABRASION PROFONDE RESISTENCIA A LA ABRASIÓN PROFUNDA		UNI EN ISO 10545-7	Classi da 0 a 5 come dichiarato dal fabbricante <i>Classes from 0 to 5 as stated by the manufacturer. Klassen 0 bis 5 wie vom Hersteller angegeben. Classes de 0 à 5 conformément à la déclaration du fabricant. Clases de 0 a 5 como declarado por el fabricante.</i>	Valore a seconda del colore prodotto Value according to product colour Wert nach der Produktfarbe Valeur suivant la couleur du produit Valor según el color del producto	C1027	Come indicato As reported Wie erwähnt Comme indiqué ci dessous. Como indicado	Valore a seconda del colore prodotto Value according to product colour Wert nach der Produktfarbe Valeur suivant la couleur du produit Valor según el color del producto

Vista l'ampia gamma di prodotti i valori sopra riportati sono la media della gamma produttiva

Because the selection of products is very wide, the figures given above are the average for the product range - Angesichts des großen Produktangebots sind die oben wiedergegebenen Werte Durchschnittswerte, die sich auf die gesamte Produktion beziehen.
Etant donné la vaste gamme de produits les valeurs rapportées sont la moyenne de la gamme de production - Dada la amplia gama de productos, los valores anteriormente mencionados son la media de la gama productiva.

● **Conforme:** Complies with the standard - Anforderungen erfüllt - Conforme aux normes - Conforme con las normas.



Pastorelli S.p.A. – Via Magazzeno, 1944 41056 Savignano sul Panaro (MO) – ITALY

Tel. +39.059.739.111 – Telefax +39.059.796.291 – E-mail: info@pastorellitiles.com – www.pastorellitiles.com